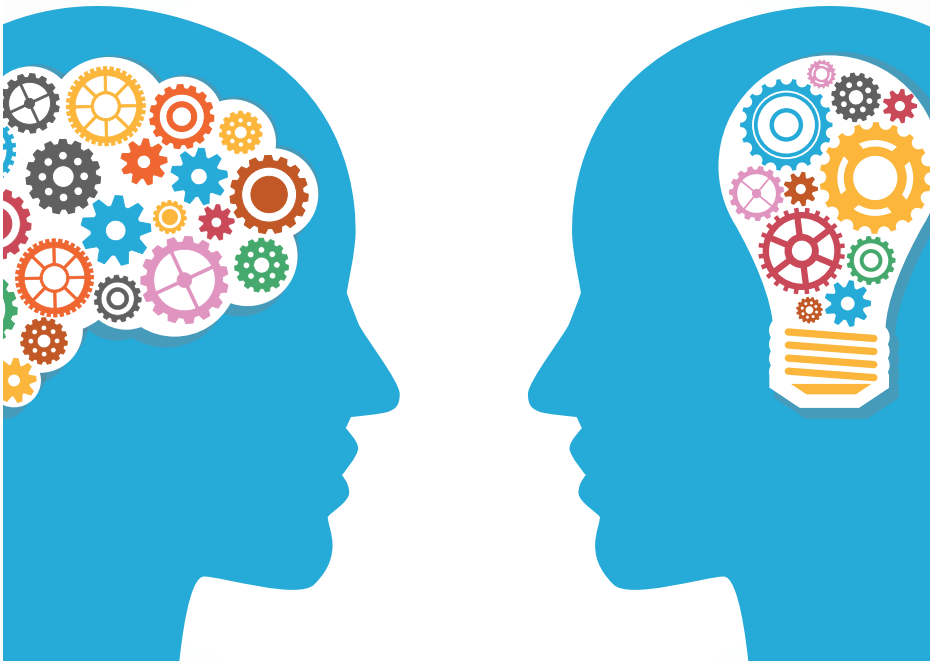


Psychology



Information for
students and parents

PSYCHOLOGY

WHY PSYCHOLOGY?

Psychology is the science of mind and behaviour. Within the course we investigate how the brain works, why people behave in certain ways and what happens when the brain functions abnormally. The AQA awarding body classes Psychology as a science A-level and it is accepted by all universities.

SO WHAT EXACTLY DO WE STUDY?

Below are examples of the sorts of questions that are asked during the course:

Developmental Psychology	How do morals develop? How do we develop our gender identity?
Social Psychology:	Why do people act differently in crowds? Why do some people NOT help others?
Research Methods:	Learn how to carry out research by designing, carrying out and analysing your own experiments.
Cognitive Psychology:	How can you improve your memory for exams? How does the mind recognise objects?
Abnormal Psychology:	What is abnormal behaviour? How successful are treatments for schizophrenia?
Biological Psychology:	Why do some people get more stressed than others? Why do we sleep and dream?
Issues in Psychology:	Why do people believe in ghosts? Do we have freewill?

During the Vietnam War, a group of American soldiers entered a village and massacred all the inhabitants, including women and children. The same soldiers had wives and children at home, the same ages as those they murdered.

What factors caused the soldiers to behave in such a barbaric fashion?

A famous musician contracted a virus that destroyed a small part of his brain. Ever since, he has been feeling as if he has just woken up from a long sleep. He can remember events prior to the infection, but has lost the ability to learn any new information. In the diary he keeps, he describes his life as “living hell on earth”.

What implications does this have for the way in which our memories work?

For more general information about psychology and examples of ideas discussed in A-level classes, go to www.simplypsychology.org

And to explore ideas further:

www.ted.com/topics/psychology

HOW IS THE COURSE ASSESSED?

Examinations consist of short essays and structured questions. There is no coursework in the chosen specification.

HOW IS THE COURSE ORGANISED?

As with all subjects in the Maynard, the students are taught in small, friendly groups to enable all of them to participate confidently. Other skills acquired during the course include computing skills (using, for example, PowerPoint, Excel and Word), simple mathematical and statistical procedures, debating and researching your own ideas. We attend lectures out of school and visit Paignton Zoo as part of the Lower 6 Research Methods section.

SUBJECT CONTENT

Compulsory content

- Social influence
- Memory
- Attachment
- Psychopathology
- Approaches in Psychology
- Biopsychology
- Research methods
- Issues and debates in psychology

Option 1 (one of these topics)

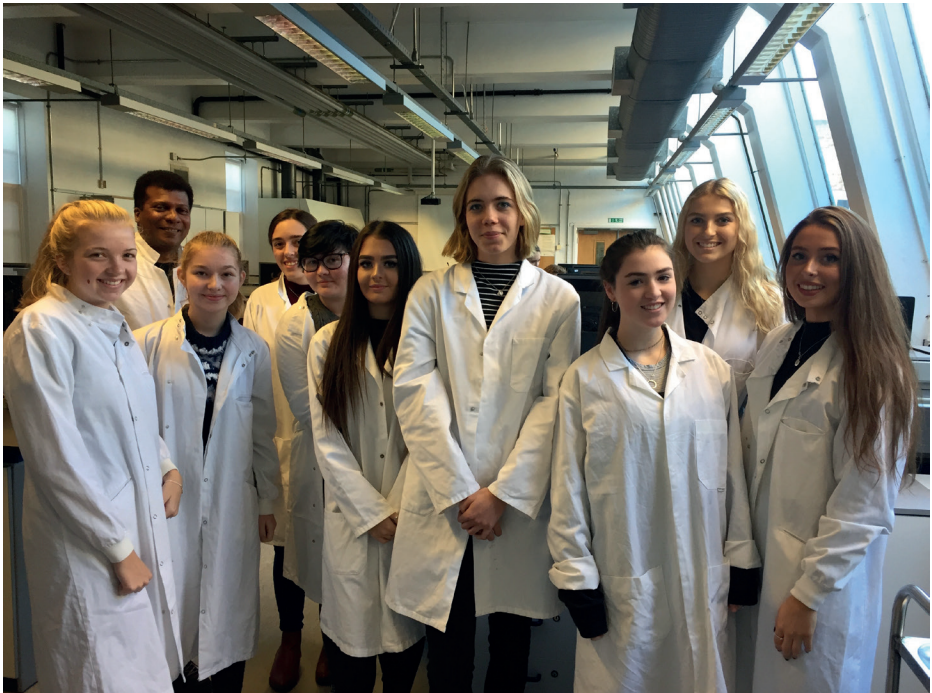
- Relationships
- Gender
- Cognition and development

Option 2 (one of these topics)

- Schizophrenia
- Eating behaviour
- Stress

Option 3 (one of these topics)

- Aggression
- Forensic psychology
- Addiction



The Maynard School
Denmark Road
Exeter
Devon
EX1 1SJ

Enquiries
Tel: +44 (0)1392 355998
admissions@maynard.co.uk
www.maynard.co.uk