



THE
MAYNARD
SCHOOL
EXETER

MADE FOR GIRLS AGE 4 – 18

11+ & 13+ ENTRANCE ASSESSMENTS, SCHOLARSHIPS AND FEES ASSISTANCE

For September 2026 Entry

ENTRANCE ASSESSMENTS, SCHOLARSHIPS AND FEES ASSISTANCE FOR 2026 ENTRY

The Maynard offers a number of scholarships and bursarial support to girls entering the school at 11+ (Year 7) and 13+ (Year 9).

Scholarships may be combined with a means-tested bursary and applications for both must be made by Monday 1st December 2025.

SCHOLARSHIPS

We offer a range of scholarships to reflect academic, sporting, musical or creative talent. All scholarships are awarded on merit and are worth between 5-10% of the tuition fees. Scholarships are conditional upon the recipient's active and full participation in appropriate academic, sporting, musical or creative activities at school.

External candidates for scholarships must be registered in order to apply. A Registration Form and a Scholarship Application Form can be found on our website: www.maynard.co.uk

Equally, talented internal candidates from Year 6 (11+) and Lower 4/Year 8 (13+) are also encouraged to apply.

For further details, please contact our Admission Team on admissions@maynard.co.uk or on 01392 355998.

HONORARY SCHOLARSHIPS

We also offer a limited number of Honorary Scholarships. Although these have no financial value, they are a special recognition of a student's ability and talent as evidenced throughout the application process.

ADDITIONAL INFORMATION

11+ and 13+ internal and external candidates can apply for up to two of the following scholarships: Academic, Art, Drama, Music, Sport.

Please note, students can only hold a maximum of any two scholarships throughout their time at The Maynard.



BURSARIES

If your daughter would benefit from the educational experience at the Maynard School but your family is not in a position to cover the full fees, she may be eligible for a means-tested bursary. A bursary is calculated by the Finance Office and can account for up to a 45% reduction in fees depending on parental income. As a general guide, a family with a combined income of £60,000 and over will not be eligible.

Bursaries can be awarded in conjunction with scholarships. Families may write to the Business Manager (bursarsoffice@maynard.co.uk) to be considered for bursarial support once the girls are registered. Applicants will be asked to submit evidence of income and other financial information. This will be reviewed annually and will continue through your daughter's time at the school, including in the Sixth Form.

Means-test forms will need to be submitted to the Business Manager no later than **Monday 1st December 2025.**



THE 11+ ENTRANCE ASSESSMENT

THE 11+ ENTRY ASSESSMENT MORNING

All external candidates currently in Year 6 and looking at entry into our Senior School in September 2026 are required to sit the Entrance Assessment on Saturday 10th January 2026.

11+ external applicants must complete a Registration Form and pay the £150 +VAT fee by **Monday 1st December 2025** in order to sit the Entrance Assessment.

Internal candidates already in Year 6 at the Maynard School need not sit the Entrance Assessment.

ENTRY ASSESSMENT PROCESS FOR EXTERNAL APPLICANTS

Students will take separate assessments in English, Maths, Verbal & Non-Verbal Reasoning. We use an assessment specialist for the provision of a series of interesting, interactive and fun activities in order to benchmark the candidate. These cover basic concepts in Maths & English from the national curriculum along with more problem-solving games.

Sample questions are available under 'Admissions' on our website (www.maynard.co.uk) although we do advise that extra coaching for the assessments is not necessary.

WHEN YOU WILL HEAR FROM US

We aim to inform all candidates (internal and external) in writing whether they have been successful in the week commencing **Monday 12th January 2026**.





11+ SCHOLARSHIPS

Internal and external candidates in Year 6 can apply for up to two of the following scholarships: Academic, Sports, Music, Drama and Art.

PLEASE NOTE, students can only hold a maximum of any two scholarships throughout their time at The Maynard.

ACADEMIC - 11+

An Academic Scholarship is worth 5-10% of the tuition fees. Means-tested bursaries can raise considerably the effective amount of the award.

APPLICATION DEADLINES

11+ Academic Scholarship application forms (external and internal candidates) should be submitted by **Monday 1st December 2025**.

The assessment date for candidates applying for an 11+ Academic Scholarship is **Tuesday 20th January 2026**.

External candidates must complete a registration form prior to applying for scholarships.

ASSESSMENT PROCESS

Applicants should be working at above expected standard for age.

All academic scholarship candidates (external and internal) will sit our Entrance Assessment on Saturday 10th January 2026. The top academic performers in this assessment will then be invited to interview with our Head, Mrs Gregory.

Candidates are encouraged to bring with them to interview examples of their academic achievements and any particular areas of interest.

Candidates will be asked a series of questions to ascertain their intellectual curiosity, love of learning and appetite for exploring new ideas.

Scholarship decisions are based on 11+ assessment results, school reports and on their performance during their interview with the Head.

SCHOLASTIC REQUIREMENTS

Candidates awarded a scholarship are expected to maintain a high academic standard and show leadership in their scholastic approach to their studies, inside and outside of the classroom. It is expected that they will engage in wider clubs that are of an academic nature.



ART - 11+

An Art Scholarship is worth 5-10% of the tuition fees. Means-tested bursaries can raise considerably the effective amount of the award.

11+ Art Scholarship application forms (external and internal candidates) should be submitted by **Monday 1st December 2025**.

The assessment date for candidates applying for an 11+ Art Scholarship is **Tuesday 20th January 2026**.

External candidates must complete a registration form prior to applying for scholarships.

ASSESSMENT PROCESS

Candidates should include five images of their work with their online application. Shortlisted candidates, selected on the strength of their portfolio, will then be invited to an assessment day.

Applicants will also be required to produce a piece of work from a given stimulus as part of the assessment day. Materials will be provided by the department.

They should also bring with them to the assessment day a portfolio of work as well as their school sketchbook as a focus for discussion during interview. Unframed work is preferable and all large scale/3D work must be photographed.

All candidates will be interviewed by the Head of Art and by Mrs Gregory, the Head, during the assessment day.

SCHOLASTIC REQUIREMENTS

Candidates awarded a scholarship are expected to study Art to at least GCSE level. The Head reserves the right to remove the scholarship if the candidate decides to drop the subject for A-level.

Art Scholars are expected to be involved with Art clubs for younger students and helping in the department on Open Mornings.





DRAMA - 11+

A Drama Scholarship is worth 5-10% of the tuition fees. Means-tested bursaries can raise considerably the effective amount of the award.

11+ Drama Scholarship application forms (external and internal candidates) should be submitted by **Monday 1st December 2025**.

The assessment date for candidates applying for an 11+ Drama Scholarship is **Tuesday 20th January 2026**.

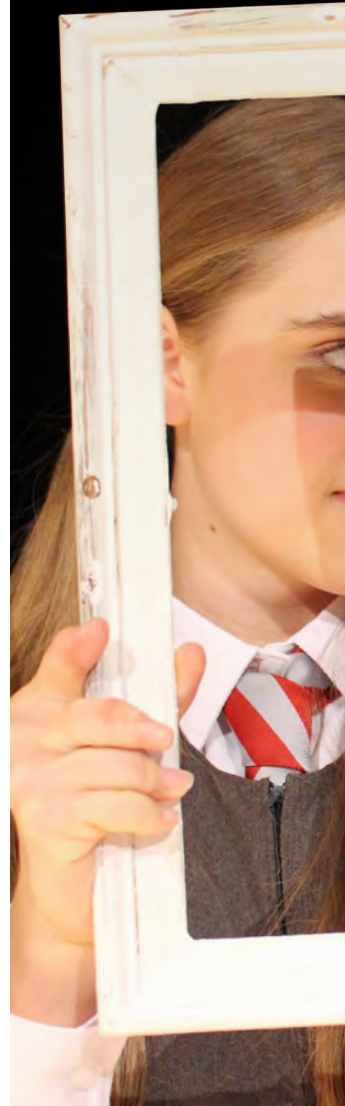
External candidates must complete a registration form prior to applying for scholarships.

ASSESSMENT PROCESS

Assessment is made by interview and observation of practical performance or skills. Candidates must prepare in advance a short monologue of no more than 2 minutes to perform from a published play.

Candidates will also be interviewed by the Head of Drama to discuss their understanding and interest of drama as a wider subject. They should be prepared to discuss any recent performances they have taken part in and any recent productions they have seen, either professional or amateur.

All candidates will also have a short interview with Mrs Gregory, the Head, during the assessment day.



SCHOLASTIC REQUIREMENTS

Award holders are expected to audition for every drama production available to them. Additionally, they are expected to be good ambassadors for drama around the School and to take an active part in House Drama.

Candidates awarded a scholarship are expected to study Drama to at least GCSE level. The Head reserves the right to remove the scholarship if the candidate decides to drop the subject for A-level.





MUSIC - 11+

A Music Scholarship is worth 5-10% of the tuition fees. Means-tested bursaries can raise considerably the effective amount of the award.

11+ Music Scholarship application forms (external and internal candidates) should be submitted by **Monday 1st December 2025**.

The **assessment date** for candidates applying for an 11+ Music Scholarship is **Tuesday 20th January 2026**.

External candidates must complete a registration form prior to applying for scholarships.

ASSESSMENT PROCESS

Candidates should be at a standard of Grade 3 on at least one instrument. We are not expecting applicants to necessarily have already achieved this in advance of an audition, but we would like to hear performances of at least this level at the audition.

Candidates will be required to perform two pieces of music. This can entail either two pieces on one instrument or one piece on two contrasting instruments. A member of music staff can act as an accompanist, if required, and sufficient time will be given for rehearsal before the audition.

There will also be some sight-reading and aural tests appropriate to the experience of the candidate.

All candidates will be interviewed by the Director of Music and by Mrs Gregory, the Head, during the assessment day.

SCHOLASTIC REQUIREMENTS

A Maynard music scholar is expected to play a full role in the musical life of the School. Girls will be required to take part in at least one regular ensemble and perform in at least one concert or music event each term.

Candidates awarded a scholarship are expected to study Music to at least GCSE level.

SPORT - 11+

A Sport Scholarship is worth 5-10% of the tuition fees. Means-tested bursaries can raise considerably the effective amount of the award.

11+ Sport Scholarship application forms (external and internal candidates) should be submitted by **Monday 1st December 2025**.

The assessment date for candidates applying for an 11+ Sport Scholarship is **Tuesday 20th January 2026**.

External candidates must complete a registration form prior to applying for scholarships.

ASSESSMENT PROCESS

Candidates for the Sports Scholarship will offer one or more sports to a high standard, preferably having reached at least county standard.

Candidates must be competing in one or more sports outside of the school setting. As well as demonstrating natural aptitude, candidates will be required to be a good role model within the department and show good attitude in all lessons or extra-curricular activities.

Within the assessment, candidates will be expected to undertake a range of performance-based fitness tests. Components of speed, agility, power, coordination and game based aerobic/anaerobic endurance will be assessed. The candidates will also be required to demonstrate their technical skills and tactical knowledge of their chosen sports.

All candidates will be interviewed by the Director of Sport and by Mrs Gregory, the Head, during the assessment day.

SCHOLASTIC REQUIREMENTS

Sports Scholars at The Maynard School will have the opportunity to:

- Regularly play sport in both team and individual sporting competitions
- Become members of the Athlete Development Programme
- Benefit from general and specific strength and conditioning
- Be mentored throughout the duration of their programme.

Award holders are expected to maintain a high standard of fitness, represent the school in various sporting competitions and house matches and demonstrate the behaviours that would be expected of a higher performing athlete. Award holders will also be required to support the PE Department at school events, including Open Mornings.





THE 13+ ENTRANCE ASSESSMENT

(EXTERNAL APPLICANTS ONLY)

THE 13+ ENTRY ASSESSMENT MORNING (EXTERNAL APPLICANTS ONLY)

All external applicants in Year 8 seeking a place at The Maynard in Year 9 from September 2026 must sit the Entrance Assessment test on **Saturday 10th January 2026**, regardless of whether they are applying for a scholarship or not.

These candidates must complete the Registration Form and pay the £150 fee by **Monday 1st December 2025** in order to be entered for the assessment.

ASSESSMENT PROCESS FOR EXTERNAL APPLICANTS

Students will take separate assessments in English, Maths, Science, Verbal & Non-Verbal Reasoning. We use an assessment specialist for the provision of a series of interesting, interactive and fun activities in order to benchmark the candidate. These cover basic concepts in Maths & English from the national curriculum along with more problem-solving games.

Sample questions are available on our website (www.maynard.co.uk) under 'Admissions' although we do advise that extra coaching for the assessments is not necessary.

WHEN YOU WILL HEAR FROM US

We aim to inform all candidates (internal and external) in writing whether they have been successful in the week commencing **Monday 20th January 2026**.





13+ SCHOLARSHIPS

Internal and external candidates in Year 8 (Lower 4) can apply for up to two of the following scholarships: Academic, Sports, Music, Drama and Art.

Please note, students can only hold a maximum of any two scholarships throughout their time at The Maynard.

ACADEMIC - 13+

An Academic Scholarship is worth 5-10% of the tuition fees. Means-tested bursaries can raise considerably the effective amount of the award.

13+ Academic Scholarship application forms (external and internal candidates) should be submitted by **Monday 1st December 2025**.

The assessment date for candidates applying for a 13+ Academic Scholarship is **Thursday 22nd January 2026**.

External candidates must complete a registration form prior to applying for scholarships.

ASSESSMENT PROCESS

Candidates will be invited to a short interview with our Head, Mrs Gregory. They are encouraged to bring with them examples of their academic achievements and areas of interest they have.

Candidates will be asked a series of questions to ascertain their intellectual curiosity, love of learning and appetite for exploring new ideas.

Scholarship decisions are based on 13+ assessment results (external applicants only), school reports and on their performance during their interview with the Head.

SCHOLASTIC REQUIREMENTS

Candidates awarded a scholarship are expected to maintain a high academic standard and show leadership in their scholastic approach to their studies, inside and outside of the classroom. It is expected that they will engage in wider clubs that are of an academic nature.

Academic Scholars are expected to be involved in the wider School community, helping at Open Mornings and being a role model for their peers.



ART - 13+

An Art Scholarship is worth 5-10% of the tuition fees. Means-tested bursaries can raise considerably the effective amount of the award.

13+ Art Scholarship application forms (external and internal candidates) should be submitted by **Monday 1st December 2025**.

The assessment date for candidates applying for a 13+ Art Scholarship is **Thursday 22nd January 2026**.

External candidates must complete a registration form prior to applying for scholarships.

ASSESSMENT PROCESS

Candidates should include 10 images of their work with their online application. Shortlisted candidates, selected on the strength of their portfolio, will then be invited to an assessment day.

Applicants will be required to produce a piece of work from a given stimulus as part of the assessment day. Materials will be provided by the department.

They should also bring with them to the assessment day a portfolio of work as well as their school sketchbook as a focus for discussion during interview. Unframed work is preferable and all large scale/3D work must be photographed.

All candidates will be interviewed by the Head of Art and by Mrs Gregory, the Head, during the assessment day.

SCHOLASTIC REQUIREMENTS

Candidates awarded a scholarship are expected to study Art to at least GCSE level. The Head reserves the right to remove the scholarship if the candidate decides to drop the subject for A-level.

Art Scholars are expected to be involved with Art clubs for younger students and helping in the department on Open Mornings.





DRAMA - 13+

A Drama Scholarship is worth 5-10% of the tuition fees. Means-tested bursaries can raise considerably the effective amount of the award.

13+ Drama Scholarship application forms (external and internal candidates) should be submitted by **Monday 1st December 2025**.

The **assessment date** for candidates applying for a 13+ Drama Scholarship is **Thursday 22nd January 2026**.

External candidates must complete a registration form prior to applying for scholarships.

ASSESSMENT PROCESS

Assessment is made by interview and observation of practical performance or skills. Candidates must prepare in advance a short monologue of no more than 2 minutes to perform from a published play. Design candidates must present a portfolio of design ideas for a published play of their choice; either Lighting/ Set/ Sound/Costume. All candidates must be prepared to discuss a live theatre show that they have seen in the last two years.

Candidates will also be interviewed by the Head of Drama to discuss their understanding and interest of drama as a wider subject. They should be prepared to discuss any recent performances they have taken part in and any recent productions they have seen, either professional or amateur.

All candidates will also have a short interview with Mrs Gregory, the Head, during the assessment day.

SCHOLASTIC REQUIREMENTS

Award holders are expected to audition for every drama production available to them. Additionally, they are expected to be good ambassadors for drama around the School and to take an active part in House Drama.

Candidates awarded a scholarship are expected to study Drama to at least GCSE level. The Head reserves the right to remove the scholarship if the candidate decides to drop the subject for A-level.

MUSIC - 13+

A Music Scholarship is worth 5-10% of the tuition fees. Means-tested bursaries can raise considerably the effective amount of the award.

13+ Music Scholarship application forms (external and internal candidates) should be submitted by **Monday 1st December 2025**.

The assessment date for candidates applying for a 13+ Music Scholarship is **Thursday 22nd January 2026**.

External candidates must complete a registration form prior to applying for scholarships.

ASSESSMENT PROCESS

Candidates should be at a standard of Grade 5 on at least one instrument. We are not expecting applicants to necessarily have already achieved this in advance of an audition, but we would like to hear performances of at least this level at the audition.

Candidates will be required to perform two pieces of music. This can entail either two pieces on one instrument or one piece on two contrasting instruments. A member of music staff can act as an accompanist, if required, and sufficient time will be given for rehearsal before the audition.

There will also be some sight-reading and aural tests appropriate to the experience of the candidate.

All candidates will be interviewed by the Director of Music and by Mrs Gregory, the Head, during the assessment day.

SCHOLASTIC REQUIREMENTS

A Maynard music scholar is expected to play a full role in the musical life of the School. Girls will be required to take part in at least two regular ensembles and perform in at least one concert or music event each term.

Candidates awarded a scholarship are expected to study Music to at least GCSE level.



SPORT - 13+

An Sport Scholarship is worth 5-10% of the tuition fees. Means-tested bursaries can raise considerably the effective amount of the award.

13+ Sport Scholarship application forms (external and internal candidates) should be submitted by **Monday 1st December 2025**.

The assessment date for candidates applying for an 11+ Sport Scholarship is **Thursday 22nd January 2026**.

External candidates must complete a registration form prior to applying for scholarships.

ASSESSMENT PROCESS

Candidates for the Sports Scholarship will be outstanding sportswomen who demonstrate exceptional skills for their age and who are playing one or more sports to at least county standard or higher.

As well as demonstrating natural aptitude, candidates will be required to be a good role model within the department and show good attitude in all lessons or extra-curricular activities.

Within the assessment, candidates will be expected to undertake a range of performance-based fitness tests. Components of speed, agility, power, coordination and game-based aerobic/anaerobic endurance will be assessed. The candidates will also be required to demonstrate their technical skills and tactical knowledge of their chosen sports.

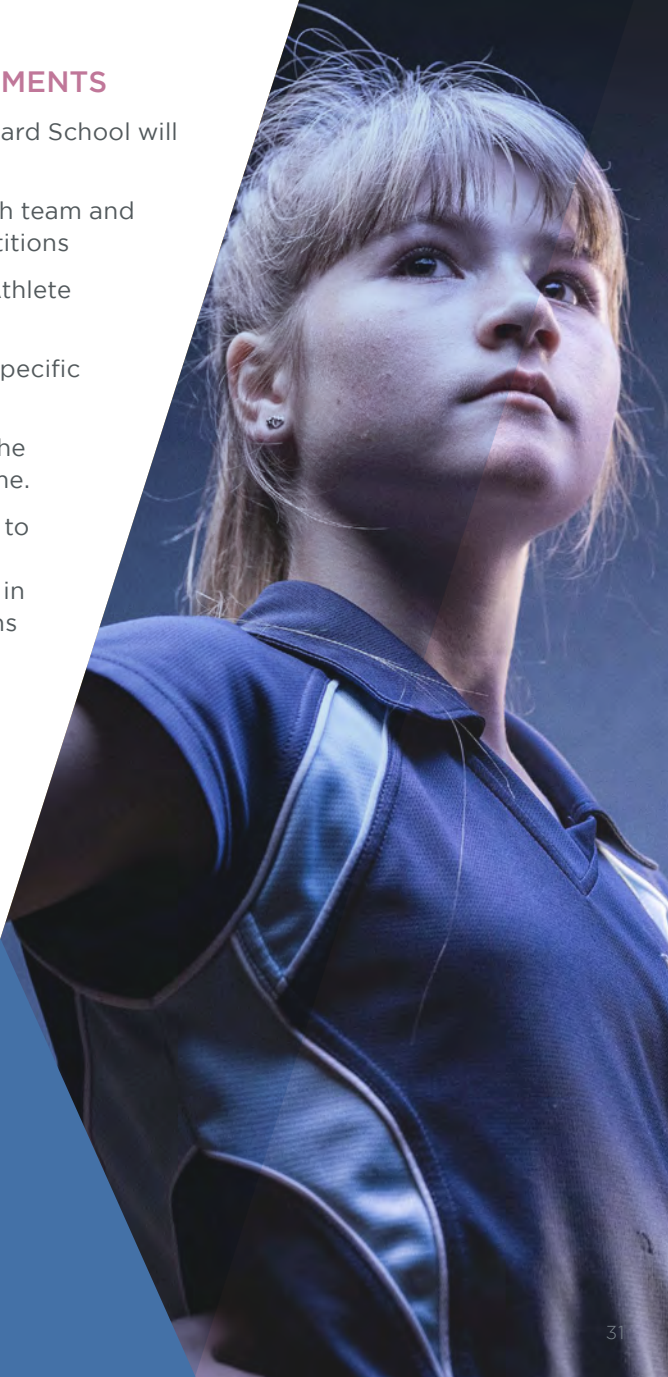
All candidates will be interviewed by the Director of Sport and by Mrs Gregory, the Head, during the assessment day. For this, they should prepare a short presentation about their sporting representations and achievements to date alongside any future ambitions.

SCHOLASTIC REQUIREMENTS

Sports Scholars at The Maynard School will have the opportunity to:

- Regularly play sport in both team and individual sporting competitions
- Become members of the Athlete Development Programme
- Benefit from general and specific strength and conditioning
- Be mentored throughout the duration of their programme.

Award holders are expected to maintain a high standard of fitness, represent the school in various sporting competitions and house matches and demonstrate the behaviours that would be expected of a higher performing athlete. Award holders will also be required to support the PE Department at school events, including Open Mornings.



MEET THE TEAM

Our lovely Admissions team of Melissa (Registrar) and Ellie (Admissions Assistant) always provide the warmest of welcomes and love nothing other than guiding you through the joining process!

If you require any further information, please don't hesitate to contact them on admissions@maynard.co.uk or via **01392 355998**.

Rest assured, they would love to hear from you!



MADE FOR GIRLS AGE 4 - 18

The Maynard School
Denmark Road
Exeter
Devon
EX1 1SJ

Tel: +44 (0)1392 355998
www.maynard.co.uk



The Maynard School is a registered charity providing education for girls.
Registered Charity No. 1099027.